

Mathematics Curricular Flowchart

Which Precollege Class?
 The typical student who places into pre-college math classes (classes numbered less than 100) follows the sequence:

Most Majors
Math 081 - 091 - 107/111/146

Most Business Majors
Math 081 - 091 - 111 - 148

Most Science Majors
Math 081 - 091 - 098 - 141

MyMathTest
Algebra Core: 77 to 100
 HS Math w/in 1 year*
2 Yrs of Algebra : A

Classes below this point meet the quantitative skills requirement for the AA degree

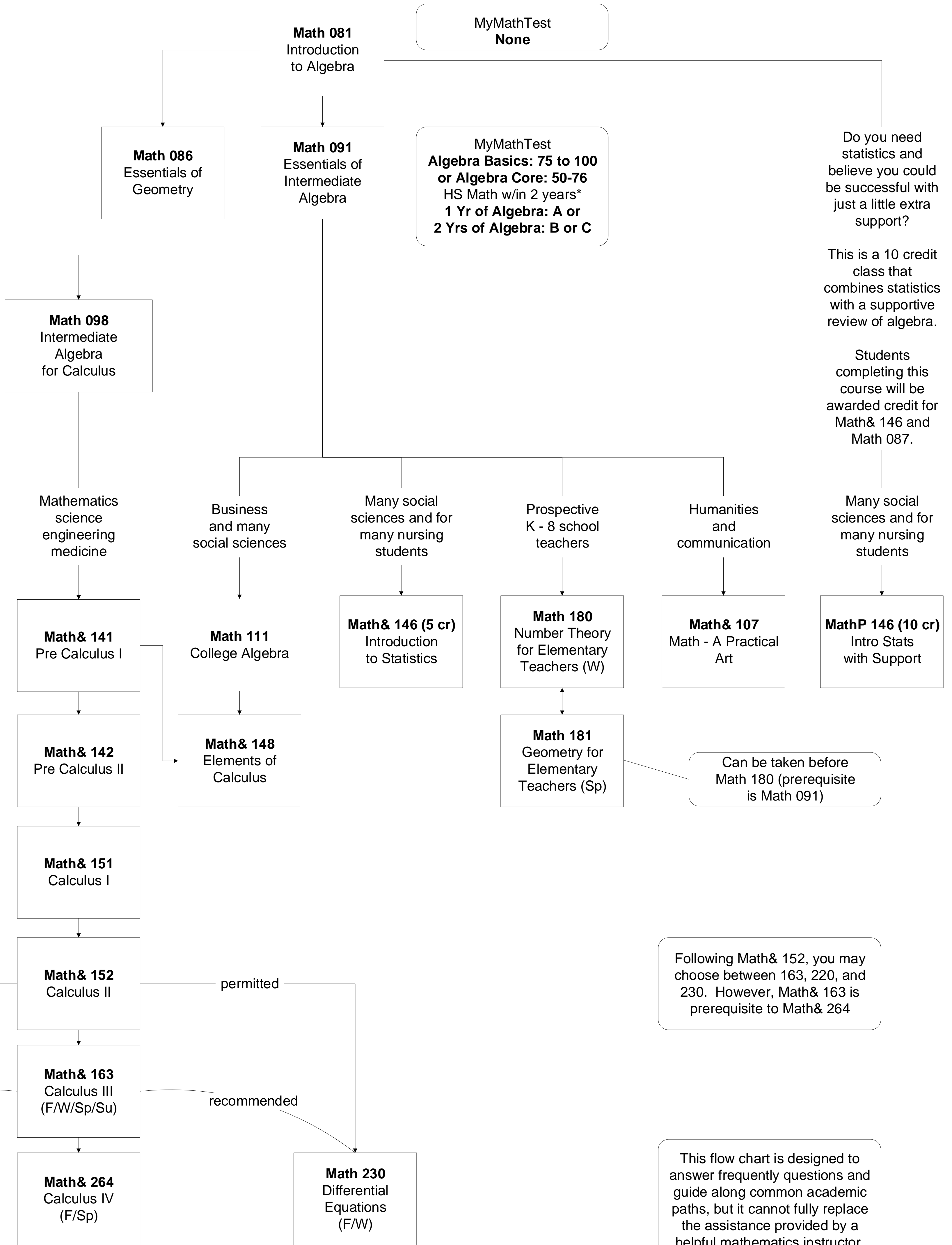
MyMathTest
Algebra Core: 77 to 100 (except 141)
Algebra STEM: 35 to 69 (for 141)
 HS Math w/in 2 years*
2 Yrs of Algebra: A (not 141) or
Math Analysis or Trig: $\geq B$ (w/in 1yr)

MyMathTest
 Math 142: **Algebra STEM: 70 to 100**
 Math 148: **Algebra STEM: 25 to 100**
 HS Math w/in 2 years*
 Math 148: **Calculus: $\geq B$**

MyMathTest
 Math 151: **Trig: 75 to 100**
 HS Math w/in 2 years*
 Math 151: **Calculus: $\geq B$**

In order to take the next class in a math sequence, you must earn a **2.0 GPA** or better in the prerequisite course.

*To use a high school transcript instead of MyMathTest, go to <https://classes.highline.edu/> and click on "Request an entry code." Follow the instructions on the screen and attach the unofficial copy of your transcript that is at most two years old.
 For more info: placeandtest.highline.edu



MyMathTest
None

MyMathTest
Algebra Basics: 75 to 100
or Algebra Core: 50-76
 HS Math w/in 2 years*
1 Yr of Algebra: A or
2 Yrs of Algebra: B or C

Do you need statistics and believe you could be successful with just a little extra support?

This is a 10 credit class that combines statistics with a supportive review of algebra.

Students completing this course will be awarded credit for Math & 146 and Math 087.

Can be taken before Math 180 (prerequisite is Math 091)

Following Math & 152, you may choose between 163, 220, and 230. However, Math & 163 is prerequisite to Math & 264

This flow chart is designed to answer frequently questions and guide along common academic paths, but it cannot fully replace the assistance provided by a helpful mathematics instructor, frontdoor, or pathway advisor.

Please ask your mathematics instructor or visit advising for more personalized assistance.

For more information, visit the mathematics faculty whose offices may be found in buildings 15 and 18. Or visit our website:
math.highline.edu

updated
 Fall 2019